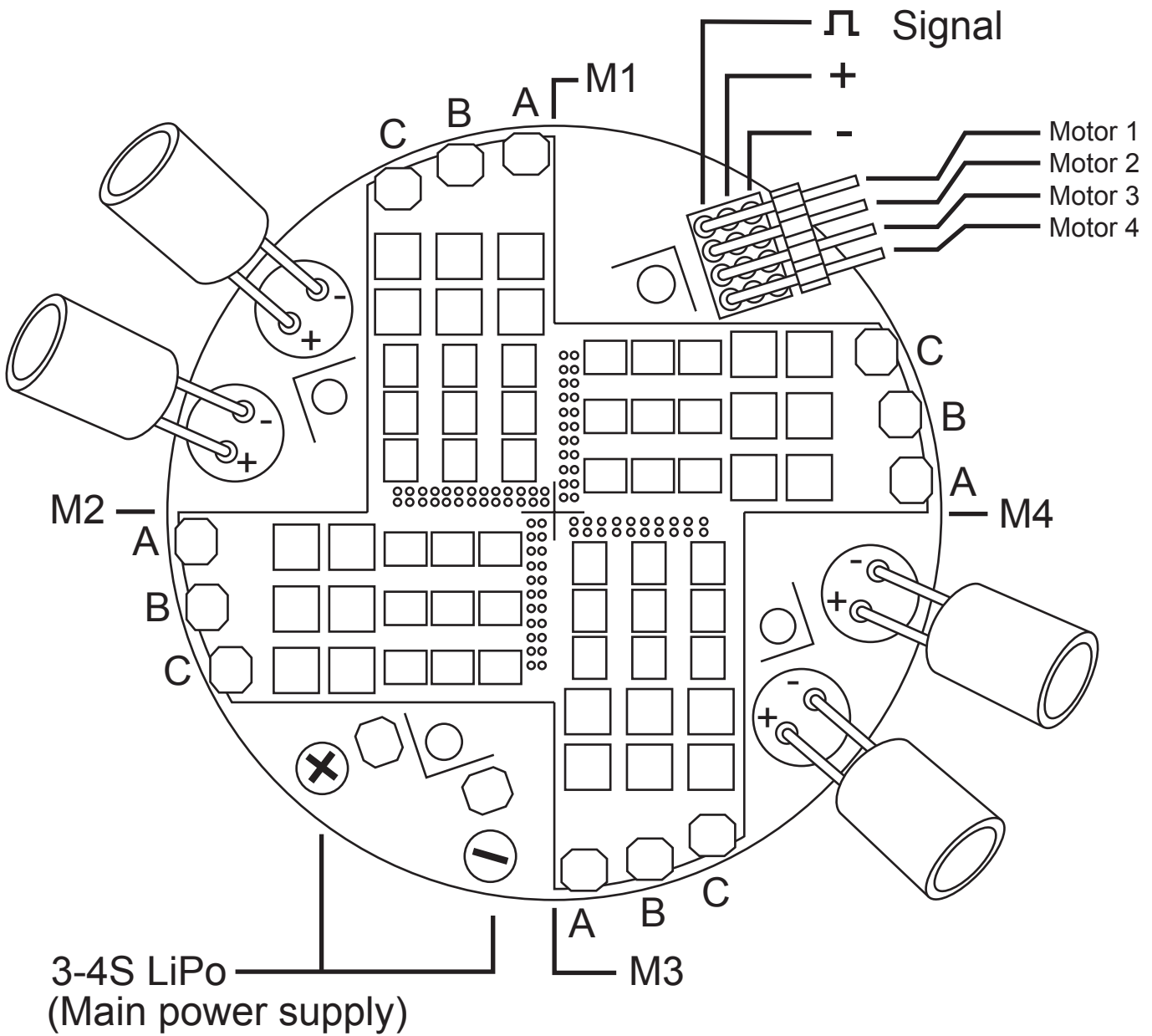
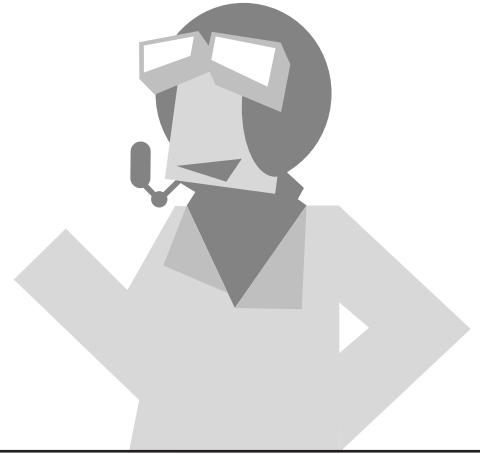
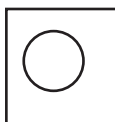


SD-E2G

4 in 1 ESC

Manual



 = Assembly hole

System status	Audio signal
System check successful	B--B--
Throttle stick in wrong starting position	BBBBBB...
Throttle signal error	B-----B-----B...
Main power supply error	BB---BB---BB---BB...
Ready for update	123-123
Update successful	321-321
Update error (please repeat)	BBB---BBB---BBB...
Firmware error (please repeat)	no signal

„B“ = note C7, = duration 100ms ;
Time between „B“ und „B“ = 20 ms ; „-“ = 100ms ;

Technical Data:

Required Operating-Voltage: DC 9,5V - 17,5V, 3-4S Li-Polymer
Max. Volt per unit: 32Amp continuous, 40Amp up to 15 seconds.
Cooling system required: NO
Dimensions: 90mm
Weight: 42g
SBEC: None

Features:

General: No complicated wiring; Throttle Stick Command synchronized; Power distribution synchronized; No internal magnetic interference; Perfect for professional tasks;

Low voltage protection:

Voltage is checked immediately after connecting the power supply. If the Voltage is not in a safe area, the ESC will give a warning and shut down the power supply. This check is only performed once after activating your power supply to prevent shutdown of the power supply in flight due to short Battery errors.

Throttle protection:

You can only start your Multi-Rotor if the throttle stick is in his neutral position on start up. Please reboot if you get the throttle error signal.

Throttle signal error protection:

Should the throttle error signal show up or the connection to your transmitter is lost, the power supply will be cut after 3 seconds. If the signal re-emerges power supply is restored.

Firmware Update:

You can update your firmware with the USB-TTL Adapter and our assistant software.